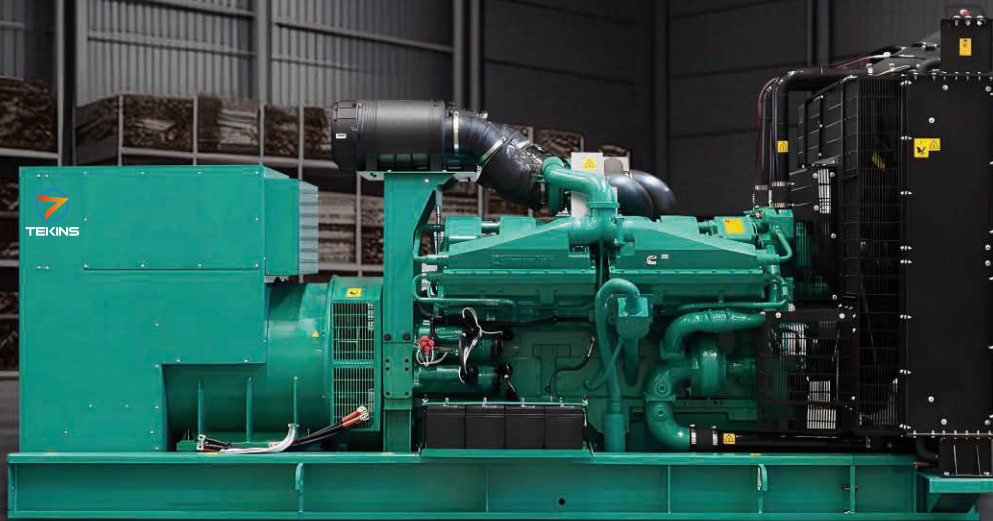




# POWER ALL-IN-ONE

Global Power Generation Solution Supplier

One-Stop Solutions from Engines to Power Plants



TEKINS GENERATOR SET



MAMKINS DIESEL ENGINE



TEKINS ALTERNATOR

上海特金斯新能源科技有限公司  
SHANGHAI TEKINS NEW ENERGY TECHNOLOGY CO.,LTD

# PRODUCT



## INNOVATION IS OUR DRIVE

GLOBAL POWER GENERATION SOLUTION SUPPLIER!



## DIESEL ENGINE FOR GENSET

DRIVE THE WORLD, POWER THE DREAM



## CONTROL THE SOURCE OF ELECTRICITY



DRIVE THE WORLD, POWER THE DREAM





# CATALOGUE

目录  
CONTENT

## Company Profile

Tekins' Industrial Chain

2

## Project

Power Plant in Malaysia

3

## Products

### 01: Generator Set

a: Original Standby Genset

b: Brand Prime Genset

### 02: Diesel Engine

Mamkins Diesel engine

### 03: Alternator

Tekins Alternator

# COMPANY INTRODUCTION

## 公司介绍

Tekins is a leading enterprise specializing in the foreign trade export of power generation equipment. With a focus on diesel generator sets and alternators, we have been dedicated to providing high-quality products and excellent services to our global customers.

Our advantage is that we have integrated the entire industry chain of engines, alternators, and generator sets. Our diesel generator sets are engineered with advanced technology, ensuring reliable performance, high efficiency, and low fuel consumption. They are suitable for various applications, including industrial use, emergency power backup, and construction projects. The generators we offer also feature top-notch quality, providing stable power output and long service life. Over the years, we have established a wide sales network across the world. Our professional team, from sales to after-sales service, is committed to meeting the diverse needs of customers. We strive to build long-term partnerships based on mutual trust and benefit.

TEKINS is headquartered in Shanghai and has established standardized production and manufacturing centers for core products in Shaanxi, Jiangsu and Anhui.

Our Shaanxi and Jiangsu factories manufacture various types of diesel generator sets : open type sets, canopy type sets, trailer type sets, and special generator sets with different voltage frequencies. Main engines are not only from our own engines but also from first-level leading manufacturers of engine brand, who apply high quality standards and state-of-the-art technology for the design and manufacture of their devices and brands. These range from oversea brands PERKINS, DEUTZ, CUMMINS, VOLVO, DAEWOO, MAN, MTU, to national brands SHANGCHAI, YUCHAI, WEICHAI, which can meet the most varied requirements for the use of power generators in practice. We also manufacture alternator and strive to become a one-stop service provider, allowing customers to use our products without any worries. All kinds of our Generator sets are widely used in factories, buildings, communications, data centers, oil fields, transportation, power plant and other fields.

The Anhui factory is one of the important diesel engine manufacturer in China, mainly engaged in the research and development, design, manufacturing, and sales of diesel engines. We have more than 35000 m² workshop and multiple platforms with power range from 132kw to 1300kw, providing users with a wide range of options.

Our goal is to always deliver quality products and services that exceed customer expectations, so as to achieve common growth and common prosperity. TEKINS Power, pursuing excellence, is willing to work with you to create a better tomorrow.



•TEKINS

[www.tekinspower.com](http://www.tekinspower.com)

# COMPANY PRESENTATION



■ SHANGHAI TEKINS NEW ENERGY TECHNOLOGY CO.,LTD



■ SHANGHAI MAMKINS ENGINE CO.,LTD



■ LIMING POWER GENERATION EQUIPMENT CO., LTD



The background of the entire page is a dark, high-contrast image of interlocking mechanical gears. The gears are rendered in a dark grey or black color, with some highlights that suggest a metallic texture. They are arranged in a way that creates a sense of depth and complexity, with some gears in the foreground being more prominent than others in the background. The overall tone is industrial and technical.

# PROJECT

## PROJECT INTRODUCTION

The most representative project is the Malaysia State Grid project, which requires a daily continuous power supply of 30MW. We use 33 Gensets of 1000kw to provide uninterrupted power supply for 12 hours a day. From project design, product production, on-site installation and debugging, online and offline operation and maintenance control, as well as on-site stock of major components, we provide strong support for this overseas project with super professional funds and technical capabilities. We hope to take this opportunity to spread our experience and capabilities to more power solutions around the world.

最具代表性的项目是马来西亚国家电网项目，该项目每天需要30MW的连续供电。我们使用33台1000kw的发电机组，每天提供12小时的不间断电源。从项目设计、产品生产、现场安装调试、线上线下运维控制，以及主要部件的现场库存，我们以超专业的资金和技术能力为这一海外项目提供强有力的支持。我们希望借此机会将我们的经验和能力传播到世界各地的更多电力解决方案中。

# PROJECT

## PROJECT PICTURE

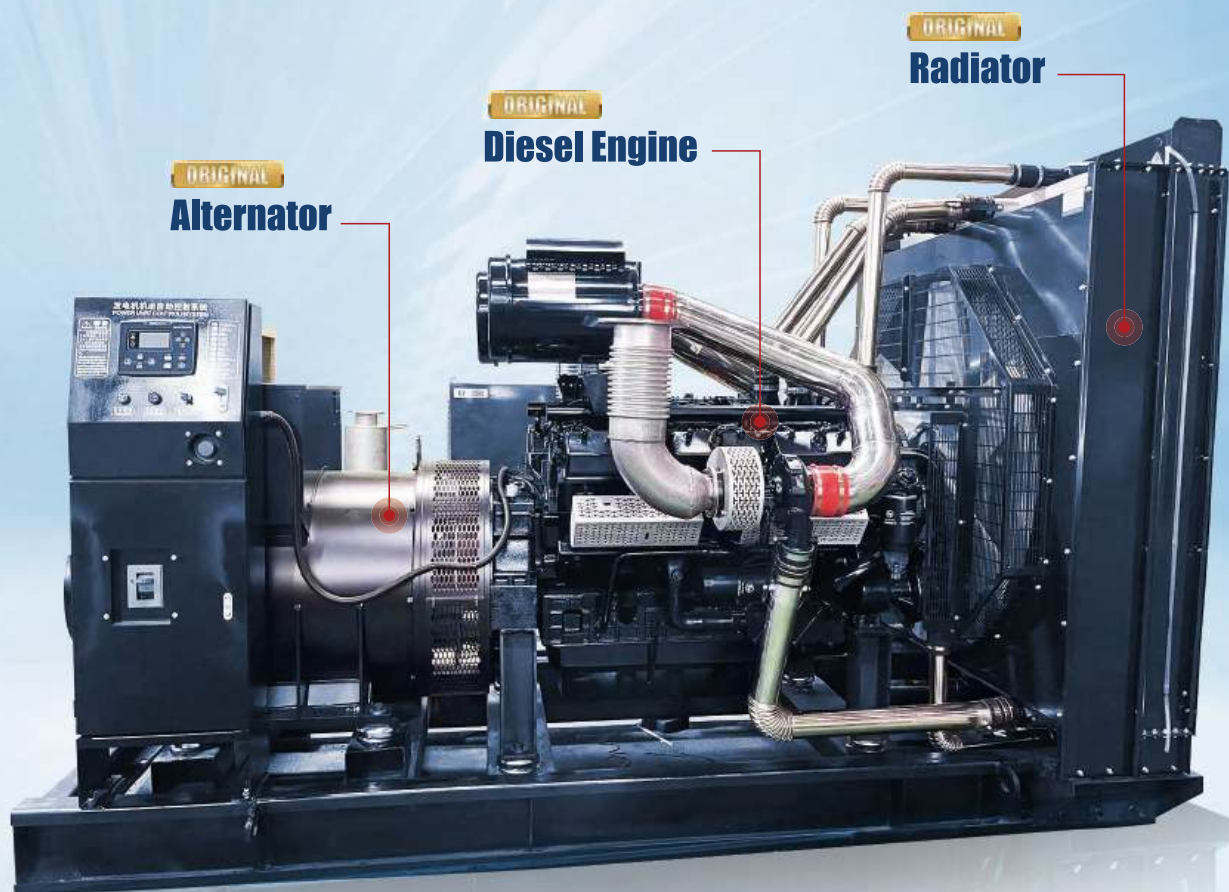






ORIGINAL

# TEKINS PRODUCTION



## TEKINS STANDBY GENERATOR SET

GLOBAL POWER GENERATION SOLUTION SUPPLIER!



# RELIABILITY BEYOND PRODUCT



# TEKINS Standby Generator Set

## Technical paarameters

Description		Technical parameters and performance indicators				
Generator set model		TK120GF	TK160GF	TK180GF	TK200GF	TK250-1GF
Power supply type		Two phase AC				
Prime power	(KW/KVA)	108/135	144/180	162/202	180/225	225/281
Standby power	(KW/KVA)	120/150	160/200	180/225	200/250	250/312
Rated voltage	(V)	400/230				
Rated current	(A)	194	259	291	324	405
Rated frequency	(Hz)	50/60				
Rated power factor	(COSΦ)	0.8				
Frequency drop	(%)	≅2				
Steady state frequency band	(%)	≅0.5				
(relative to rated frequency) Transient frequency deviation(%)	100% sudden power reduction	≅+10				
	Sudden power increase	≅-7				
Frequency recovery time	(S)	≅3				
Steady state voltage deviation	(%)	≅±1				
Transient voltage deviation(%)	100% sudden power reduction	≅+20				
	Sudden power increase	≅-15				
Voltage recovery time	(S)	≅3				
Voltage unbalance	(%)	≅1				
Engine	Model	MK8H163	MK8H217	MK9H245	MK9H272	MK9H340-1
	Maximum power(KW)	171	206	227	263	308
	Rated speed (r/min)	1500/1800				
	Number of cylinders	6				
	Bore*stroke (mm)	114*135	114*135	114*144	114*144	114*144
	Displaement (L)	8.27	8.27	8.82	8.82	8.82
	Governor regulation	Electronic control(C0m-Rail)				
	Start mode	24DC Starter water cooling				
	Cooling method	Circulating water cooling				
Alternator	Model	MKS120	MKS160	MKS180	MKS200	MKS250
	Rated power (KW)	108	144	162	180	225
	Rated voltage (V)	400				
	Rated frequency (Hz)	50/60				
	Brand	TEKINS				
Net weight	(kg)	3000	3200	3500	3500	3600
Overall dimensions:L*W*H	(mm)	3600*1600*2100				3800*1700*2100



# TEKINS Standby Generator Set

## Technical paarameters

Description		Technical parameters and performance indicators						
Generator set model		TK250GF	TK280GF	TK320GF	TK350GF	TK380GF	TK400GF	TK420GF
Power supply type		Two phase AC						
Prime power	(KW/KVA)	225/281	252/315	288/360	315/393	342/427	360/450	378/472
Standby power	(KW/KVA)	250/312	280/350	320/400	350/437	380/475	400/500	420/525
Rated voltage	(V)	400/230						
Rated current	(A)	405	453	518	567	615	648	680
Rated frequency	(Hz)	50/60						
Rated power factor	(COSΦ)	0.8						
Frequency drop	(%)	≅2						
Steady state frequency band	(%)	≅0.5						
(relative to rated frequency) Transient frequency deviation(%)	100% sudden power reduction	≅+10						
	Sudden power increase	≅-7						
Frequency recovery time	(S)	≅3						
Steady state voltage deviation	(%)	≅±1						
Transient voltage deviation(%)	100% sudden power reduction	≅+20						
	Sudden power increase	≅-15						
Voltage recovery time	(S)	≅3						
Voltage unbalance	(%)	≅1						
Engine	Model	MK13H340	MK13H380	MK13H435	MK13H476	MK13H516	MK16H560	MK16H571
	Maximum power(KW)	308	330	375	430	450	475	510
	Rated speed (r/min)	1500/1800						
	Number of cylinders	6						
	Bore*stroke (mm)	135*150	135*160	135*160	135*165	135*165	138*165	138*170
	Displaement (L)	13	13	13	13	13	16	16
	Governor regulation	Electronic control(COm-Rail)						
	Start mode	24DC Starter water cooling						
	Cooling method	Circulating water cooling						
Alternator	Model	MKS250	MKS280	MKS320	MKS350	MKS380	MKS400	MKS420
	Rated power (KW)	225	252	288	315	342	360	378
	Rated voltage (V)	400						
	Rated frequency (Hz)	50/60						
	Brand	TEKINS						
Net weight	(kg)	3900	4000	4100	4300	4600	4800	5000
Overall dimensions:L*W*H	(mm)	4000*1800*2150				4300*2100*2150		

# TEKINS Standby Generator Set

## Technical paarameters

Description		Technical parameters and performance indicators									
Generator set model		TK420GF	TK450GF	TK500GF	TK550GF	TK600GF	TK620GF	TK650GF	TK700GF	TK720GF	TK750GF
Power supply type		Two phase AC									
Prime power	(KW/KVA)	378/472	405/506	450/562	495/618	540/675	558/697	585/731	630/787	648/810	675/843
Standby power	(KW/KVA)	420/525	450/562	500/625	550/687	600/750	620/775	650/812	700/875	720/900	750/937
Rated voltage	(V)	400/230									
Rated current	(A)	680	729	810	891	972	1004	1053	1134	1166	1215
Rated frequency	(Hz)	50/60									
Rated power factor	(COSΦ)	0.8									
Frequency drop	(%)	≅2									
Steady state frequency band	(%)	≅0.5									
(relative to rated frequency) Transient frequency deviation(%)	100% sudden power reduction	≅+10									
	Sudden power increase	≅-7									
Frequency recovery time	(S)	≅3									
Steady state voltage deviation	(%)	≅±1									
Transient voltage deviation(%)	100% sudden power reduction	≅+20									
	Sudden power increase	≅-15									
Voltage recovery time	(S)	≅3									
Voltage unbalance	(%)	≅1									
Engine	Model	MK26H571	MK26H612	MK26H680	MK28H748	MK28H816	MK28H843	MK28H884	MK28H960	MK28H1100	MK28H1150
	Maximum power(KW)	510	550	610	630	660	720	780	840	936	966
	Rated speed (r/min)	1500/1800									
	Number of cylinders	12									
	Bore*stroke (mm)	135*150	135*155	135*155	135*158	135*158	135*158	135*158	138*158	138*158	138*165
	Displaement (L)	26	26	26	28	28	28	28	28	28	28
	Governor regulation	Electronic control(C0m-Rail)									
	Start mode	24DC Starter water cooling									
	Cooling method	Circulating water cooling									
Alternator	Model	MKS420-1	MKS450	MKS500	MKS550	MKS600	MKS620	MKS650	MKS700	MKS720	MKS750
	Rated power (KW)	378	405	450	495	540	558	585	630	648	675
	Rated voltage (V)	400									
	Rated frequency (Hz)	50/60									
	Brand	TEKINS									
Net weight	(kg)	5500	5600	5600	5700	6100	6100	6200	6200	6800	6800
Overall dimensions:L*W*H	(mm)	4500*2100*2450					4700*2100*2450			4900*2200*2650	



# TEKINS Standby Generator Set

## Technical paarameters

Description		Technical parameters and performance indicators				
Generator set model		TK800GF	TK850GF	TK900GF	TK950GF	TK1000GF
Power supply type		Two phase AC				
Prime power	(KW/KVA)	720/900	800/1000	-	-	-
Standby power	(KW/KVA)	800/1000	850/1062	900/1125	950/1187	1000/1250
Rated voltage	(V)	400/230				
Rated current	(A)	1296	1377	1458	1539	1620
Rated frequency	(Hz)	50/60				
Rated power factor	(COSΦ)	0.8				
Frequency drop	(%)	≤2				
Steady state frequency band	(%)	≤0.5				
(relative to rated frequency) Transient frequency deviation(%)	100% sudden power reduction	≤+10				
	Sudden power increase	≤-7				
Frequency recovery time	(S)	≤3				
Steady state voltage deviation	(%)	≤±1				
Transient voltage deviation(%)	100% sudden power reduction	≤+20				
	Sudden power increase	≤-15				
Voltage recovery time	(S)	≤3				
Voltage unbalance	(%)	≤1				
Engine	Model	MK32H1210	MK32H1280	MK32H1340	MK32H1420	MK32H1480
	Maximum power(KW)	1020	1070	1120	1210	1300
	Rated speed (r/min)	1500/1800				
	Number of cylinders	12				
	Bore*stroke (mm)	138*168	138*165	138*168	138*168	138*168
	Displaement (L)	32				
	Governor regulation	Electronic control(C0m-Rail)				
	Start mode	24DC Starter water cooling				
	Cooling method	Circulating water cooling				
Alternator	Model	MKS800	MKS850	MKS900	MKS950	MKS1000
	Rated power (KW)	720	765	810	855	900
	Rated voltage (V)	400				
	Rated frequency (Hz)	50/60				
	Brand	TEKINS				
Net weight	(kg)	7700	7800	8000	8400	8600
Overall dimensions:L*W*H	(mm)	5300*2300*2900			5500*2300*2900	



# TEKINS PRIME GENERATOR SET





# ***BRAND PRIME GENERATOR SET***



CUMMINS



DEUTZ



MITSUBISHI



MTU



PEKINS



VOLVO



YUCHAI



WEICHA



SDEC



# DRIVE THE WORLD, POWER THE DREAM!



**114**  
**8H/9H**

POWER RANGE  
132KW-308KW



**G128**  
**13H/16H**

POWER RANGE  
308KW-510KW



**12V**  
**26H/28H**

POWER RANGE  
510KW-1150KW



**12V**  
**32H**

POWER RANGE  
1020KW-1300KW

## DIESEL ENGINE

•POWER RANGE: 132kw to 1300kw

# MK 3-Emission Series

## MK 3阶段系列电站用柴油机概述



### Overview of MK III-Emission Power Station Diesel Engines

MK三阶段系列柴油机是我公司顺应时代潮流,为积极响应国家节能减排的政策所开发的符合国家三阶段排放要求的新产品,已经在国家级机构完成了排放测试,目前推向市场接受考验。

The III-Emission stage series diesel engine is a new product developed by our company to comply with the trend of the times and actively respond to the policies of energy conservation and emission reduction, which meets the national three stage emission requirements. It has completed emission testing in national institutions and is currently being tested in the market.

- **经济性高, 工作区域内最低燃油消耗率198g/kw.h**  
High economic efficiency, minimum fuel consumption rate of 198g/kw.h in the working area
- **可靠性高, 发动机平均故障间隔期达4000小时以上, 平均大修期12000小时。**  
High reliability, with an average engine failure interval of over 4000 hours and an average overhaul period of 12000 hours.
- **排放性好, 满足非道路排放 II 阶段要求。**  
Good emission performance, meeting the requirements of non road II-emission stage.
- **发动机噪音低, 轻松应对低噪声内燃电站的噪声标准。**  
Low engine noise, easy to meet the noise standards of low noise internal combustion engine power plants.





# Blue Kins: MK8H/9H Series



MK8H/9H 系列发电机组用柴油机是我公司成熟产品, 根据发电机的使用工况和特性而专门研发的经济、高效型柴油机。马力更大、动力更强、排放更低, 是电站的理想配套动力。

The MK8H/9H series diesel engine for generator sets is a mature product of our company, specifically developed as an economical and efficient diesel engine based on the operating conditions and characteristics of the generator. With higher horsepower, stronger power, and lower emissions, it is an ideal supporting power for power plants.

- 经济性高, 工作区域内最低燃油消耗率 198g/kw.h  
High economic efficiency, minimum fuel consumption rate of 198g/kw.h in the working area
- 可靠性高, 发动机平均故障间隔期达4000小时以上, 平均大修期12000小时。  
High reliability, with an average engine failure interval of over 4000 hours and an average overhaul period of 12000 hours.
- 发动机噪音低, 轻松应对低噪声内燃机电站的噪声标准。  
Low engine noise, easy to meet the noise standards of low noise internal combustion engine power plants.
- 排放性好, 满足非道路排放 II 阶段要求。  
Good emission performance, meeting the requirements of non road II-emission stage.



# Blue Kins: MK13H/16H Series



MK13H/16H系列发电机组用柴油机是我公司再G128系列柴油机基础上研制开发的一代升级产品,具有增压、中冷技术,性能优越,可靠性更强,排放和噪音指标更优化,使其更加成熟和完美。自投入市场以来,市场销量迅速上升。功率范围为308kw-510kw。可根据用户需要提供不同配置,该机型是发电机组的新颖配套动力。

The MK13H/16H series generator set diesel engine is a new generation upgraded product developed by our company based on the G128 series

diesel engine. It has turbocharging and intercooling technology, superior performance, stronger reliability, and more optimized emission and noise indicators, making it more mature and perfect. Since launched into the market, market sales have rapidly increased. The power range is 308kw-510kw. Different configurations can be provided according to user needs, and this model is a novel supporting power for generator sets.



# Blue Kins: MK26H/28H Series



MK26H/28H 系列发电机组用柴油机是我公司在12V135/12V138 系列柴油机基础上研制开发的新一代产品,该产品具有优良的动力性、经济性和可靠性。配套简单,维修方便,上万台的市场保有量和我公司良好的售后服务网络,让用户真正的免除配件供应、维修服务的后顾之忧。功率范围510kw-720kw,是发电机组的理想动力。

The MK26H/28H series generator set diesel engine is a new generation product developed by our company based on the 12V135/12V138 series diesel engine.

This product has excellent power performance, economy, and reliability. With simple supporting facilities, convenient maintenance, a market share of tens of thousands of units, and our company's excellent after-sales service network, customers can truly avoid the worries of accessory supply and maintenance services. The power range is 510kw-720kw, which is the ideal power for generator sets.



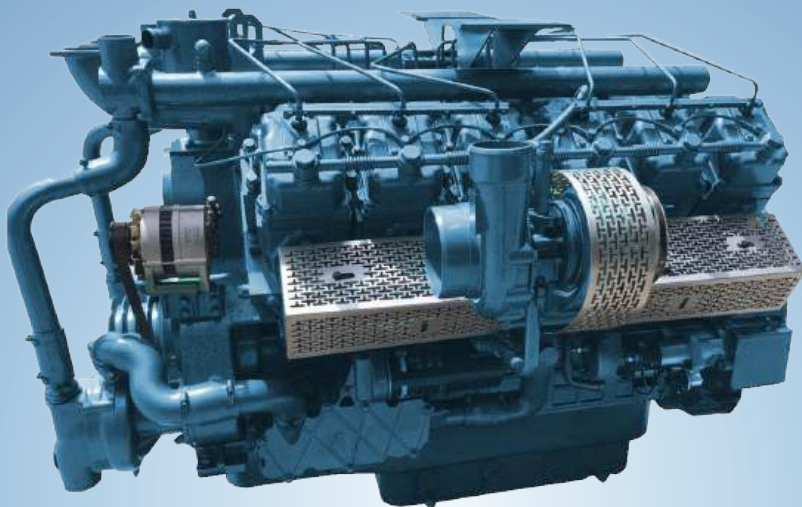


# Blue Kins: MK28H/32H Series

MK28H/32H系列发电机组用柴油机是我公司近几年大力开发的一个系列产品。该产品功率大,可靠性强,上万台的市场保有量和我公司良好的售后服务网络,让用户真正的免除配件供应、维修服务的后顾之忧。功率范围780kw-1300kw,是发电机组的理想动力。

The MK28H/32H series diesel engine for generator sets is a series of products that our company has vigorously developed

in recent years. This product has high power, strong reliability, a market share of tens of thousands of units, and our company's excellent after-sales service network, customers can truly avoid the worries of accessory supply and maintenance services. The power range is 780kw-1300kw, which is the ideal power for generator sets.



# Black Kins Series 6-Cylinders Series

黑金刚Black kins 6缸系列,是我公司针对常用发电市场,引进最新英国技术,对关键零部件采用更为先进的技术和材料进行升级改造的推出的一款高效机型。功率范围涵盖132kw-373kw,更高的性能,更低的噪音,更好的燃油经济性,更少的污染排放物。

The Black Kins 6-cylinder series is an efficient model launched by our compa-

ny for the prime power generation market, introducing the latest British technology and upgrading key components with more advanced technology and materials. The power range covers 132kw-373kw, with higher performance, lower noise, better fuel economy, and fewer pollution emissions.



# Black Kins Series 12-Cylinders Series



黑金刚Black kins 12缸系列,是我公司针对常用发电市场,引进最新英国技术,对关键零部件采用更为先进的技术和材料进行升级改造的推出的一款高效机型。功率范围涵盖445kw-660kw,高配置柴油发动机是一种在动力性、舒适性、经济性和环保性等多个方面更为优秀的柴油发动机,并且具有更高的可靠性和耐久性。

The Black Kins 12-cylinder series is an efficient model launched by our company for the prime power generation

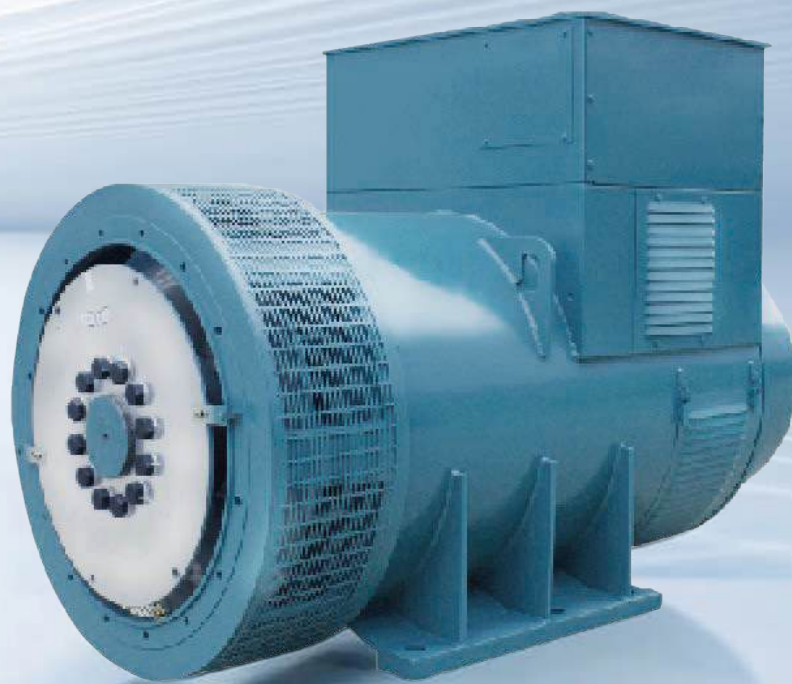
market, introducing the latest British technology and upgrading key components with more advanced technology and materials. The power range covers 445kw-660kw, and the high configuration diesel engine is a type of diesel engine that is more excellent in terms of power, comfort, economy, and environmental protection, and has higher reliability and durability.







# ALTERNATOR



# ALTERNATOR SET



**6.5-12.8 KW 100%  
copper brushless alternator**



**18-30 KW 100%  
copper brushless alternator**



**34-68 KW 100%  
copper brushless alternator**



**80-160 KW 100%  
copper brushless alternator**



**180-200 KW 100%  
copper brushless alternator**



**200-320 KW 100%  
copper brushless alternator**



**360-550 KW 100%  
copper brushless alternator**



**600-1000 KW 100%  
copper brushless alternator**



**1120-2000 KW 100%  
copper brushless alternator**



SHANGHAI TEKINS NEW ENERGY TECHNOLOGY CO.,LTD  
SHANGHAI MAMKINS ENGINE CO.,LTD  
LIMING POWER GENERATION EQUIPMENT CO., LTD



+86 18601798815  
terry@mamkins.com  
www.tekinspower.com



WECHAT



WHATSAPP



Zalo



**SHANGHAI Add:** Rm 802, Block C, No.500 ShunOing Road, Shanghai, China

**JIANGSU Add:** No.5, Baota Road, Guxi Twon, Taixing City, JiangSu, Province

**ANHUI Add:** No.10, GuangZao Road, GuangDe, Anhui, China

**SHAANXI Add:** No. 41 Guangde Road, Airport New City, Xixian New Area, Xi'an City, Shaanxi Province